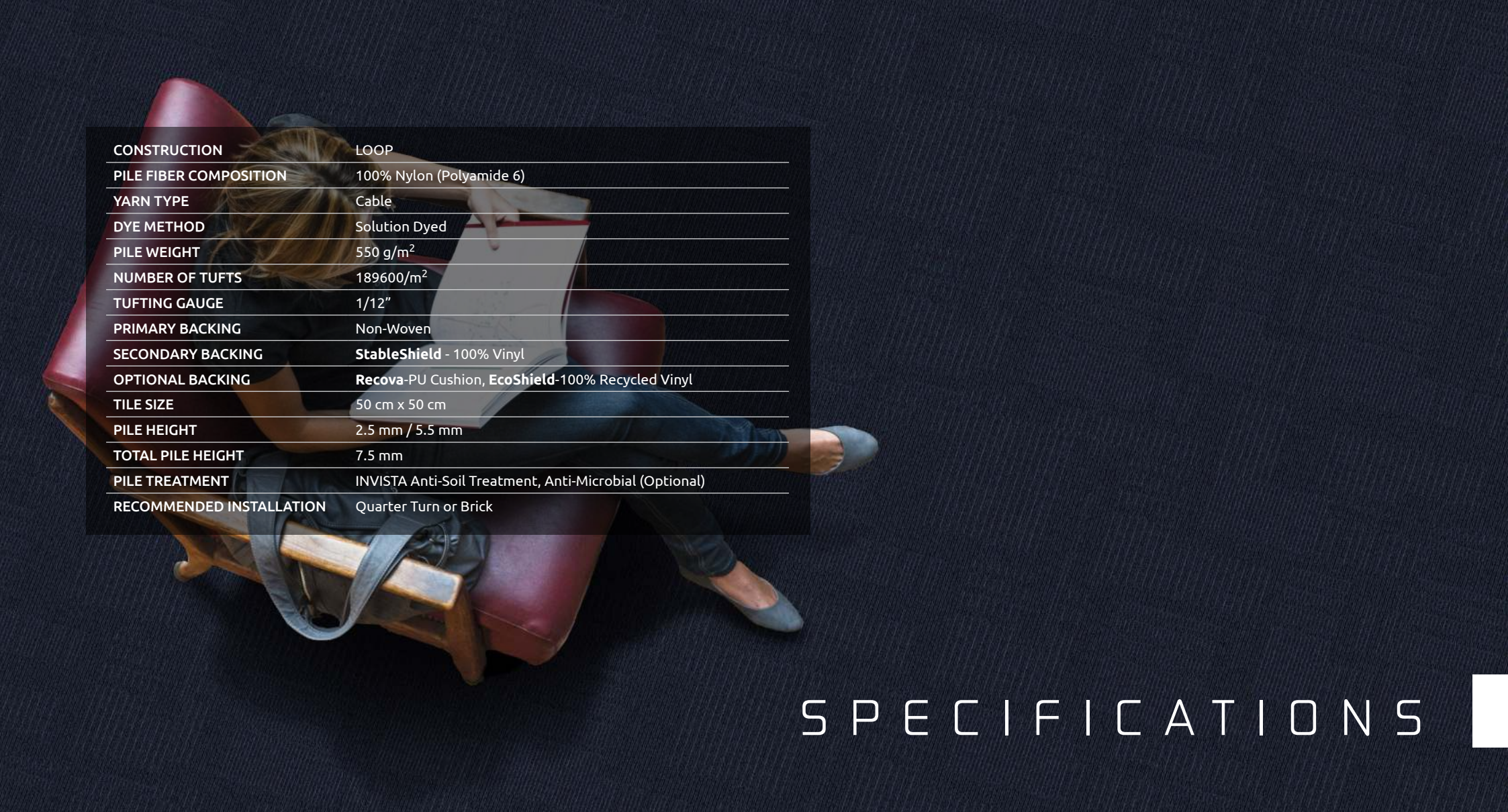


COLLEGE
DRIVE





CONSTRUCTION	LOOP
PILE FIBER COMPOSITION	100% Nylon (Polyamide 6)
YARN TYPE	Cable
DYE METHOD	Solution Dyed
PILE WEIGHT	550 g/m ²
NUMBER OF TUFTS	189600/m ²
TUFTING GAUGE	1/12"
PRIMARY BACKING	Non-Woven
SECONDARY BACKING	StableShield - 100% Vinyl
OPTIONAL BACKING	Recova -PU Cushion, EcoShield -100% Recycled Vinyl
TILE SIZE	50 cm x 50 cm
PILE HEIGHT	2.5 mm / 5.5 mm
TOTAL PILE HEIGHT	7.5 mm
PILE TREATMENT	INVISTA Anti-Soil Treatment, Anti-Microbial (Optional)
RECOMMENDED INSTALLATION	Quarter Turn or Brick

SPECIFICATIONS

COLOURLINE



College Drive - 6643



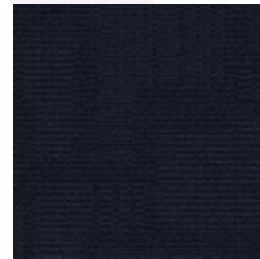
College Drive - 6644



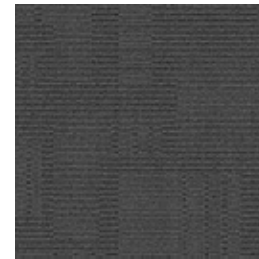
College Drive - 6646



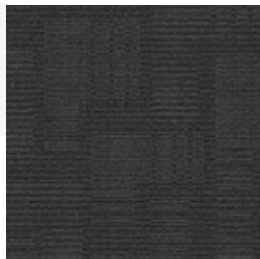
College Drive - 6647



College Drive - 6657



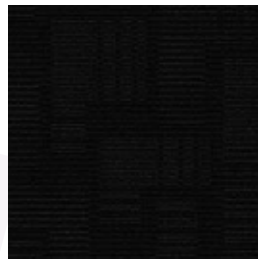
College Drive - 6670



College Drive - 6671



College Drive - 6672



College Drive - 6673



College Drive - 6674



College Drive - 6675

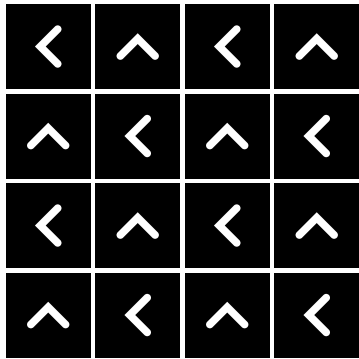


College Drive - 6677

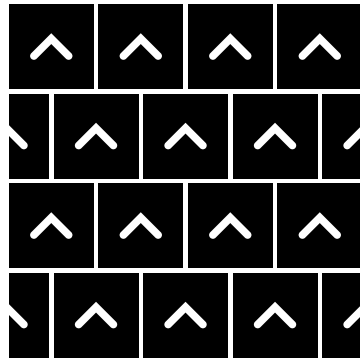


HOW TO INSTALL

QUARTER TURN



BRICK





Standard
CARPETS

www.standardcarpets.com